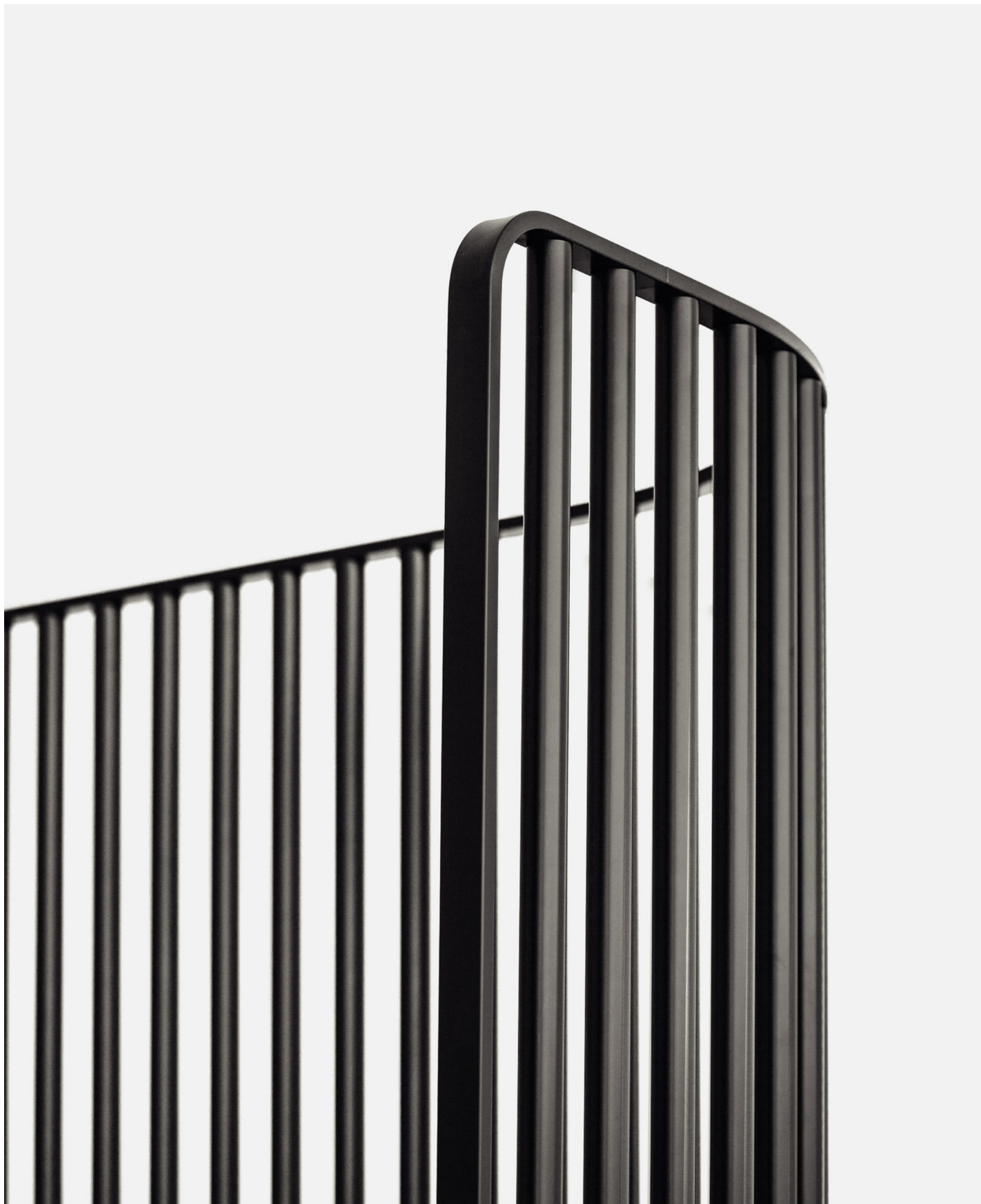


SCREEN

Francesco Rota | 2016



SCREEN

Francesco Rota | 2016

Like punctuation, SCREEN panels coordinate the lines of the contemporary office. In the wide open space, the partition system created by Francesco Rota allows each work station to be defined, thanks to magnet linking system. It is an elegant "invisible" element that provides privacy in a light version. Maximum versatility for heights and for tubular wood solutions or a sound-absorbing fabric panel. The space stays open, the mind can concentrate and rest.



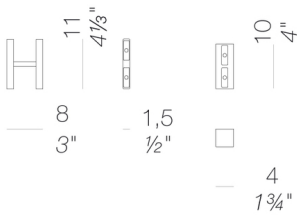
SCREEN



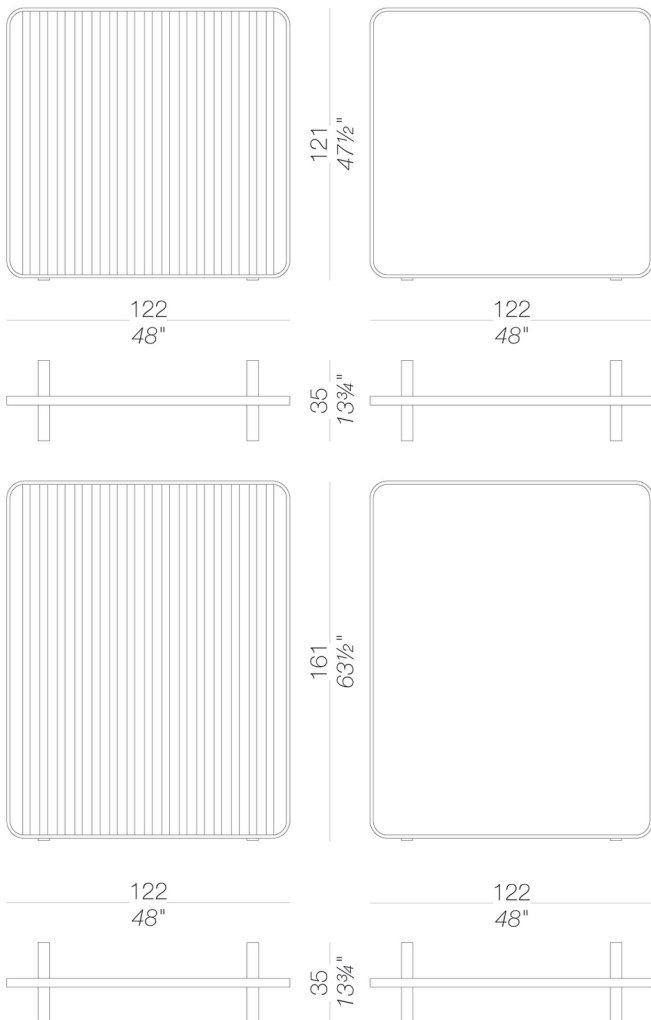
Francesco Rota | 2016

System of free standing screens with different shapes and dimensions. Metal frame with tubes either powder coated or veneered in blanch oak or oak black stained. Also available with a sound-absorbing panel in fire-retardant polyester fibers upholstered with fabric. SCREEN can be linked by using magnets and can be combined with PLUS seating system.

magnets

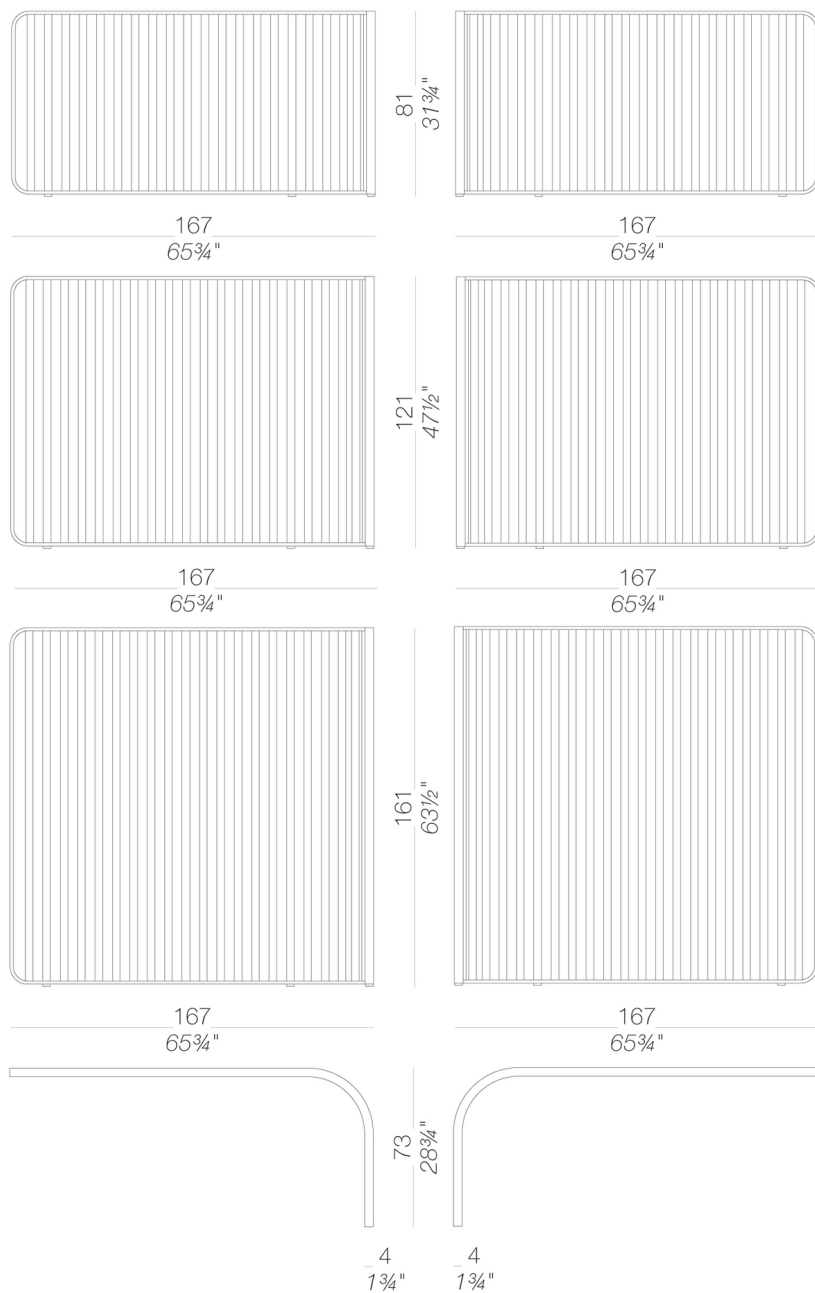


partition system



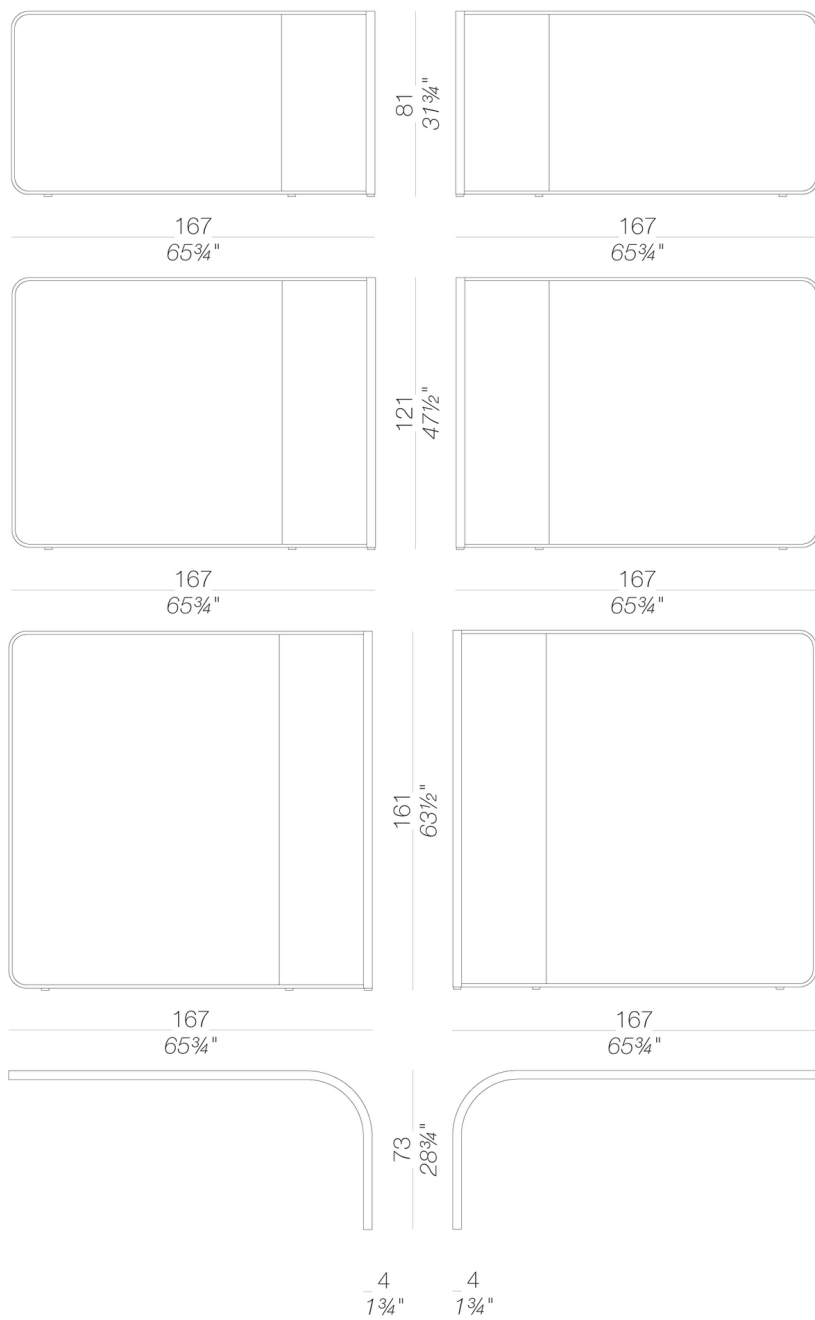
SCREEN

Francesco Rota | 2016



SCREEN

Francesco Rota | 2016



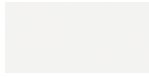
SCREEN

Francesco Rota | 2016

frame



powder coating
black
1 Colors

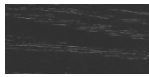


powder coating
white
1 Colors

tubes



wood
blanch oak
1 Colors



wood
black open pore
1 Colors

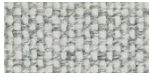


powder coating
black
1 Colors



powder coating
white
1 Colors

upholstery



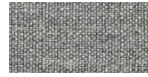
fabric
Hallingdal 65
47 Colors



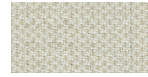
fabric
Canvas 2
40 Colors



fabric
Steelcut Trio 3
48 Colors



fabric
Remix 2
24 Colors



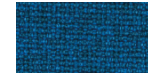
fabric
Clara 2
24 Colors



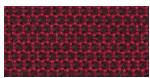
fabric
Divina MD
24 Colors



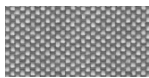
fabric
Divina Melange 2
24 Colors



fabric
Medley
37 Colors



fabric
Swing
24 Colors



fabric
Maya
43 Colors



fabric
Jet
44 Colors



fabric
Laser J Flash
24 Colors



fabric
Fiord
24 Colors



fabric
Tonica 2
39 Colors

consult the portfolio for the range of colors, fabrics, eco-leather, soft-leather.

use and maintenance instructions

Clean all parts in wood, leather, fabric and metal with a damp cloth or a diluted neutral cleaner. Do not use cleaners with alcohol, bleach, solvent or abrasive products. Any liquid spilt on the product must be wiped up immediately. When lifting or moving the product, hold it on the structure and not under the seat. The product should not be subjected to unbalanced weights, as it is designed for a proper rest on the foothold (on four legs or on the base). Our company relieves from any responsibility in case of damage caused to fragile floors. Avoid any improper use of the product: do not step on the product, on the footrest or on the armrests. Avoid any movements that could compromise the proper functionality of the product or the safety of the users. Wood and leather, being natural materials, could be easily damaged. Small impurities or imperfections are within quality standard range. Do not expose the product to weather conditions or atmospheric agents, nor to heat sources over 40°C. Also products for outdoor use could be afflicted by atmospheric agents. The product could undergo possible exterior changes due to particular exposure to heat, humidity and saltiness. An appropriate and frequent maintenance and cleaning of the product enhances its durability. The product could change colour and shade, if exposed to direct sunlight. Maintenance has to be carried out by experienced staff. Dispose of the package only after assembling the product, in order to avoid the loss of ironmongery and components. Once the product has been dismantled, the product itself or its components must be given to the public garbage disposal system, according to the legislation in force.