

Wiggle Stool

Frank Gehry, 1972

vitra.

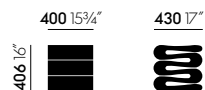


The architect Frank Gehry is known for his use of unusual materials. With his 1972 furniture series ‚Easy Edges‘, he succeeded in bringing a new aesthetic dimension to such an everyday material as cardboard. Although surprisingly simple in appearance, the pieces in this series

are very durable and robust. The ‚Easy Edges‘ Wiggle Stool is vaguely reminiscent of traditional African stools and, like the latter, makes a statement in any interior.

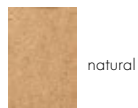
- **Material:** corrugated cardboard, edges made of natural-look hardboard.
- **Colour:** natural.

Dimensions

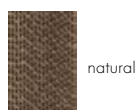


Wiggle Stool

Surfaces and colours



natural



natural

Seat shell

Article no. 09159002

Vitra is represented worldwide. Your local Vitra partner can be found at: www.vitra.com.

info@vitra.com | EN 2017

www.vitra.com/wigglestool

