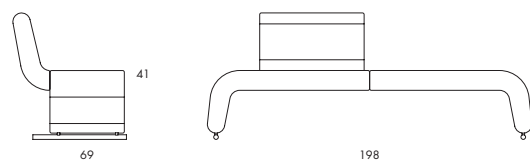
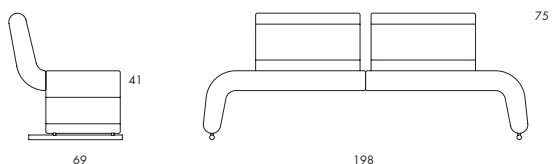


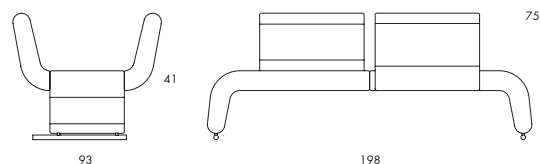
S20-00 32 kg | 1.0 m³/pc



S20-01 38 kg | 1.6 m³/pc



S20-02 44 kg | 2.0 m³/pc



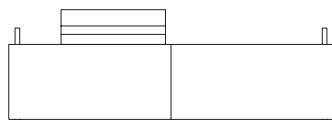
S20-02 44 kg | 2.0 m³/pc

BENCH | SOFA. Steel frame. Moulded polyurethane foam padding. Upholstered in fabric or leather. Leather as per cc. 6a. Chrome-plated steel runners (chrome III). Plastic feet.

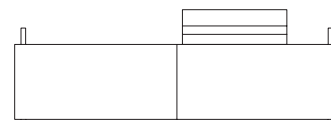
S20-00 has no backrest, S20-01 has a backrest to the left or right, S20-02 has two backrests next to each other or facing each other.



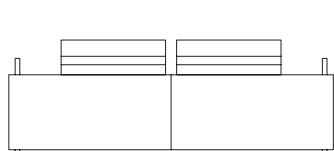
S20-00



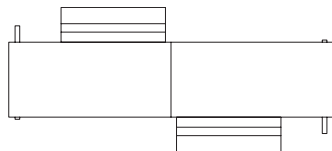
S20-01A



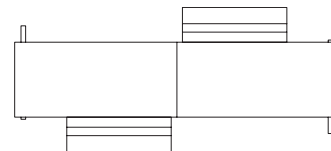
S20-01B



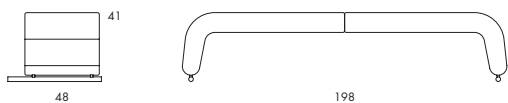
S20-02



S20-02A



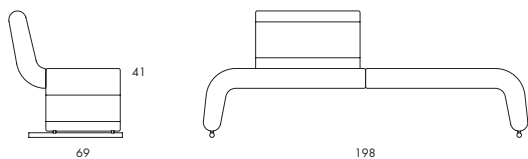
S20-02B



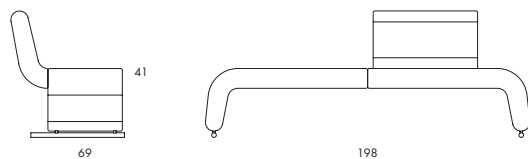
S20-00 32 kg | 1.0 m³/pc

	S20-00
Seat height	41
Overall height	41
Overall width	198
Seat depth	45
Overall depth	48
Weight, kg	32
Cbm	1





S20-01A 38 kg | 1.6 m³/pc

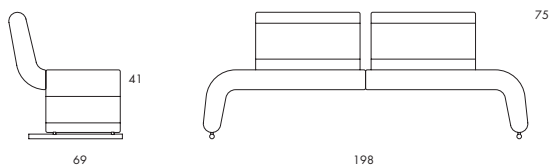


S20-01B 38 kg | 1.6 m³/pc

S20-01

Seat height	41
Overall height	75
Overall width	198
Seat depth	50
Overall depth	69
Weight, kg	38
Cbm	1.6

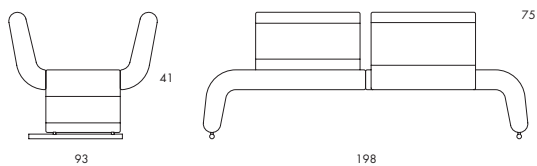




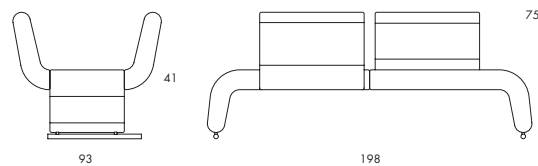
S20-02 44 kg | 2.0 m³/pc

	S20-02
Seat height	41
Overall height	75
Overall width	198
Seat depth	50
Overall depth	69
Weight, kg	44
Cbm	2





S20-02A 44 kg | 2.0 m³/pc



S20-02B 44 kg | 2.0 m³/pc

S20-02A	
Seat height	41
Overall height	75
Overall width	198
Seat depth	50
Overall depth	93
Weight, kg	44
Cbm	2

